

## C-12 Dance Theatre – Touring Tech Rider:

### The Chair

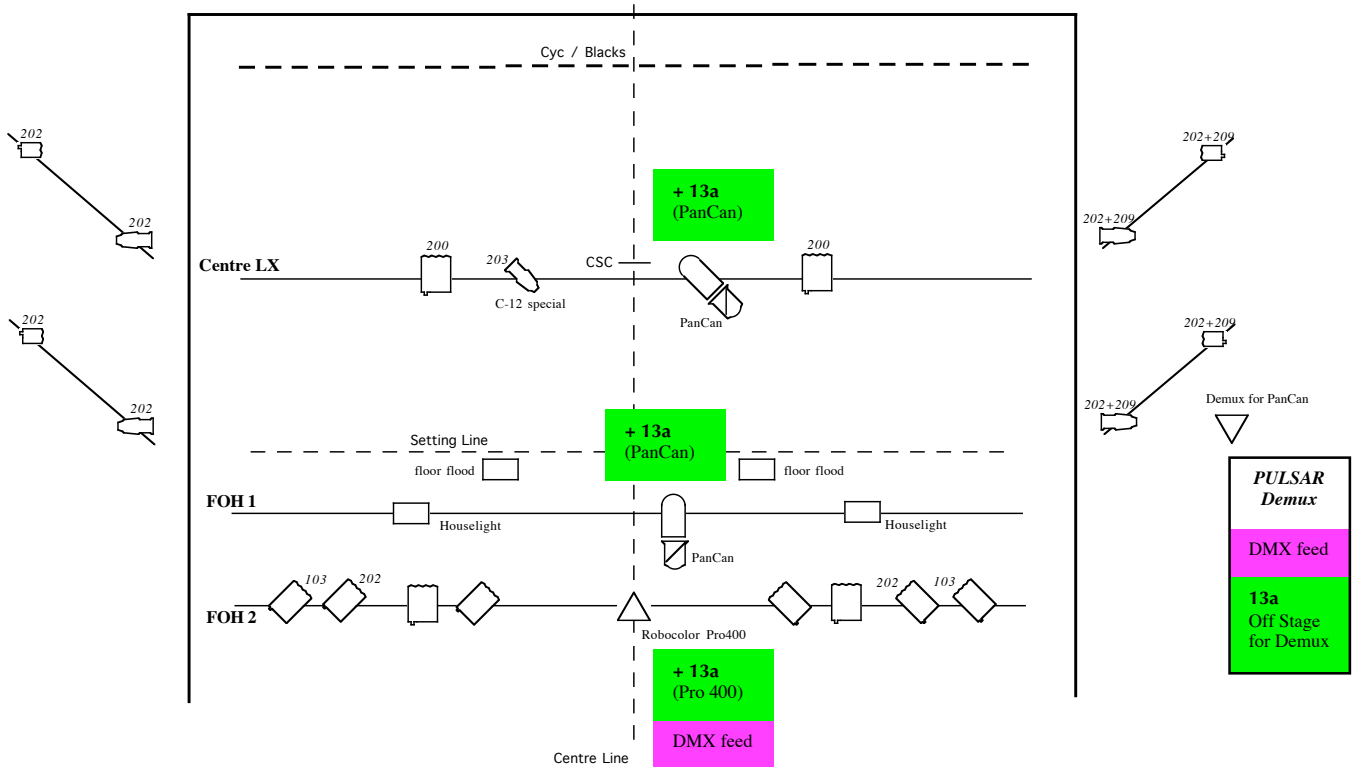
Choreography: C-12.

LD: Mikkel Buda Svak.

---

Stage:	Sprung floor with suitable vinyl dance surface or similar for barefoot dance performance.
Masking:	Full set of black Legs and Tabs. Backstage cross-over required.
Set:	1 x wooden table (toured by company) 1 x large dining chair (toured by company) 2 x small wooden stools/chairs (toured by company) 1 x small blanket/duvet (toured by company)
FX:	N/A
Pyro / live fire:	None.
Audio:	1 x CD Player with clear display + 1 x CD or MD player for backup (must be able to run simultaneously)
Toured equipment:	2 x PAR64 CP62 c/w scroller brackets. 2 x PanCan mirror attachment for PAR64 1 x Martin Robocolor Pro 400 1 x Pulsar Demux c/w control cable for PanCan 1 x ARRI Mirage 150 ch. DMX lighting board. <i>+ cables as required if not supplied by venue.</i>
Dressing rooms:	Mixed, to hold 4 people (1 Male, 3 Female) <i>+ shower facilities, lit mirrors, and ironing facilities, where possible.</i>

# The Chair



**Key:**

- 650w or 575w Profile (Wide)
- 650w PC or Fresnel
- 1Kw Fresnel or PC
- PAR64 CP62 (toured)
- PanCan Mirror+Colour Cage (toured)
- Robocolour Pro 400 (toured)
- 150w symmetrical flood (toured)

**Colour:**

LEE  
 200: 2 x Fresnel/PC; 202: 4 x Profile, 4 x PC/Fresnel;  
 203: 1 x Profile; 209: 2 x Profile, 2 x Fresnel/PC.  
 PanCans pre-fitted with L202, L204, and open white.

**The Chair – Tour LX plan.**

**C-12 Dance Theatre**

LD: Mikkel Buda Svak – 07957 271 263